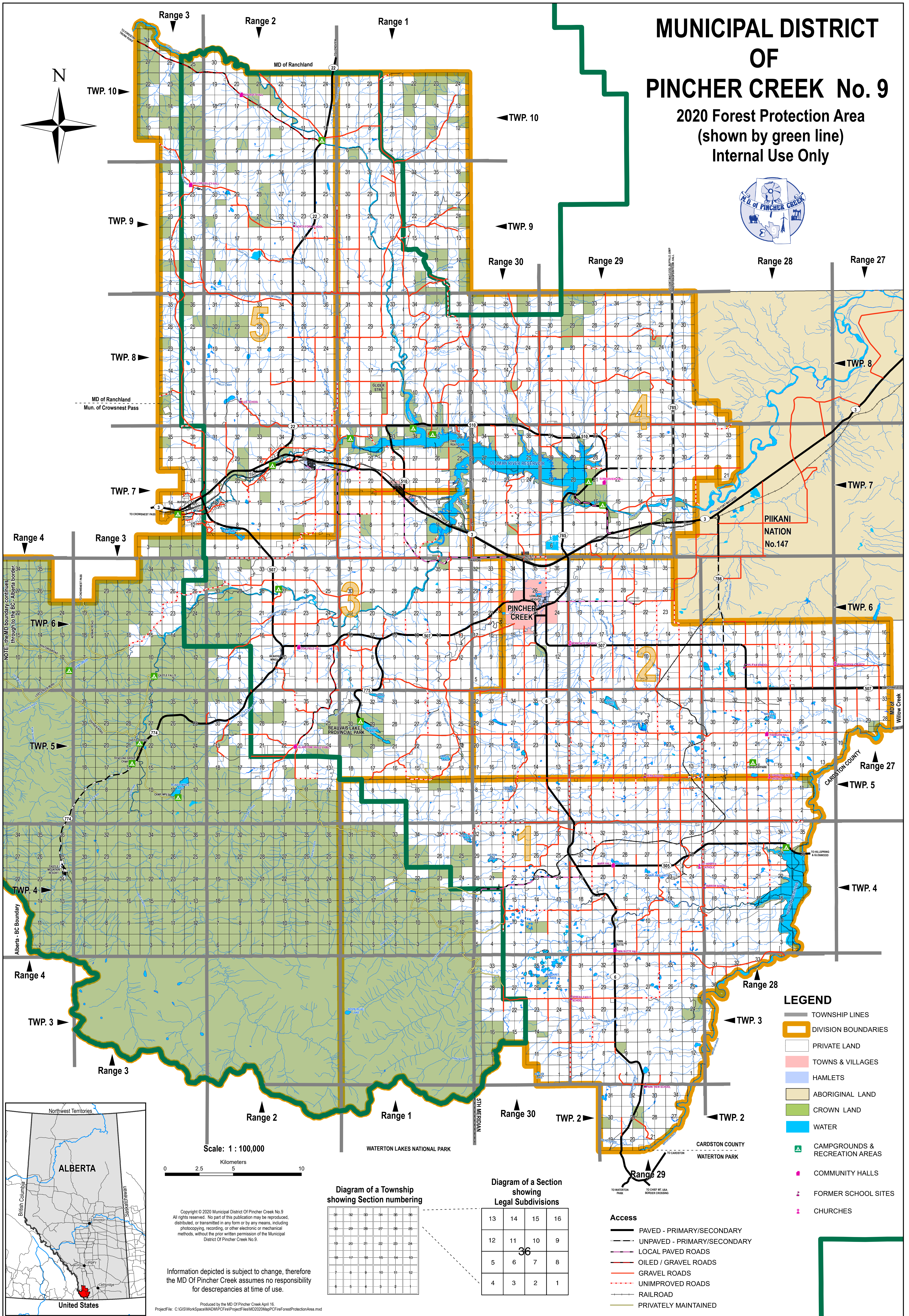
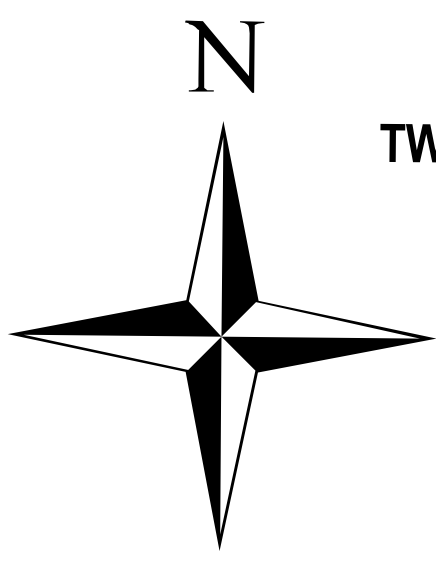
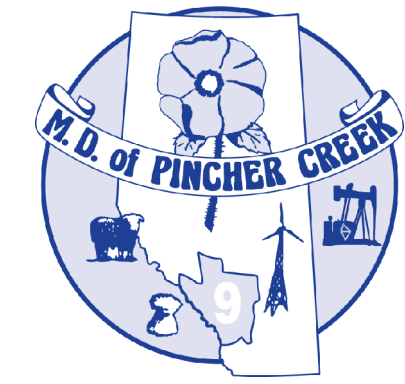


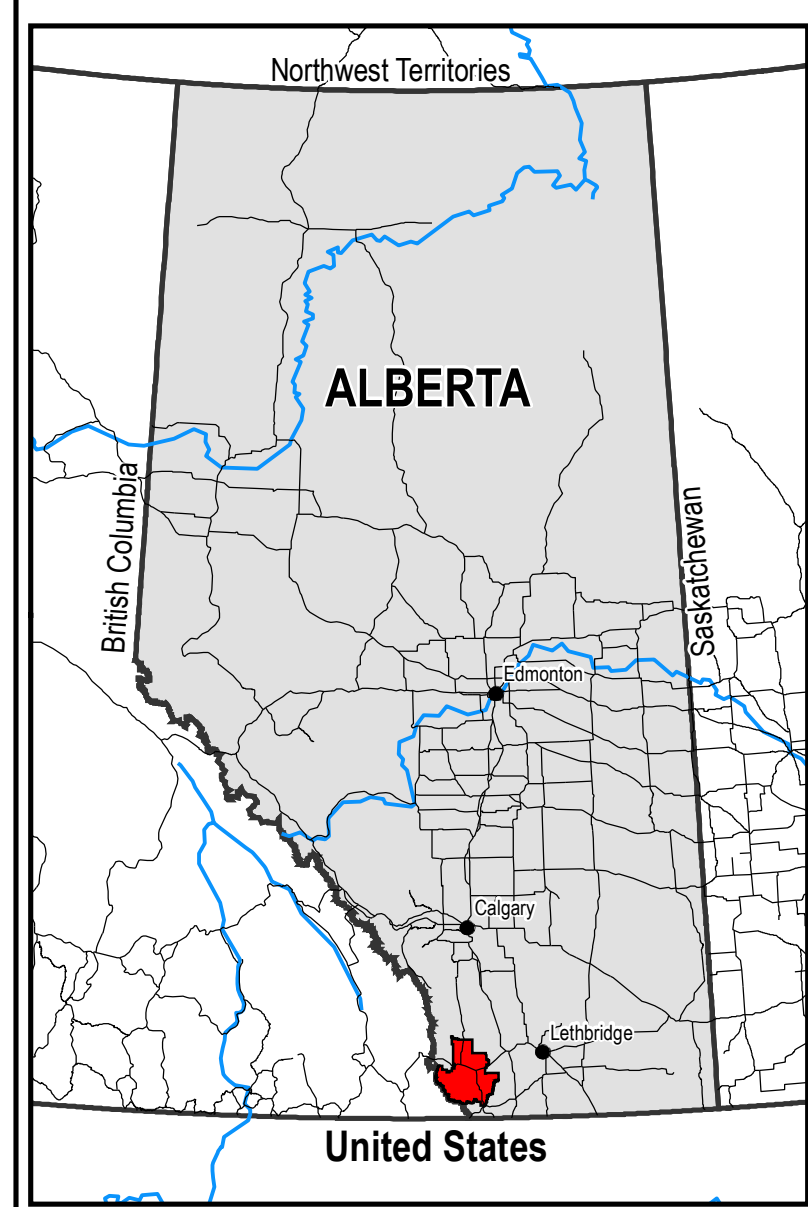
MUNICIPAL DISTRICT OF PINCHER CREEK No. 9

2020 Forest Protection Area (shown by green line)

Internal Use Only



NOTE: the MD boundary continues through to the BC-Alberta border.



Scale: 1 : 100,000

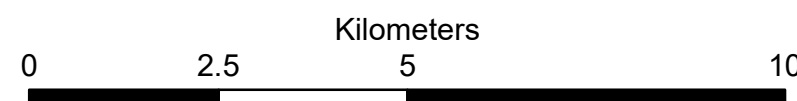


Diagram of a Township showing Section numbering

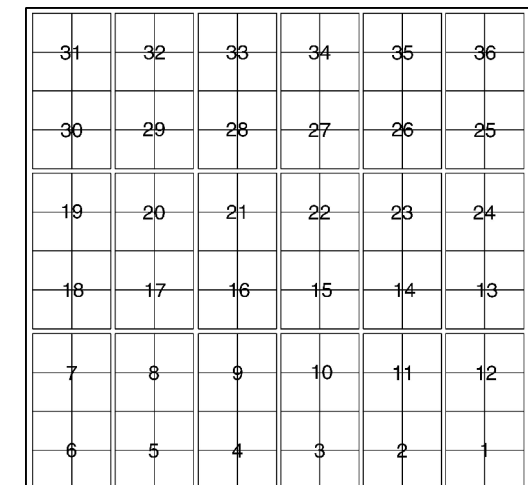
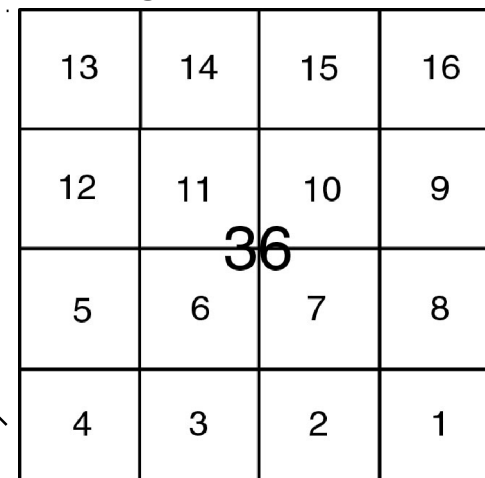


Diagram of a Section showing Legal Subdivisions



Information depicted is subject to change, therefore the MD Of Pincher Creek assumes no responsibility for discrepancies at time of use.

Produced by the MD Of Pincher Creek April 16.
Project File: C:\GIS\WorkSpace\MADMP\CF\ProjectFiles\MD2020\Map\ForestProtectionArea.mxd

LEGEND

- TOWNSHIP LINES
- DIVISION BOUNDARIES
- PRIVATE LAND
- TOWNS & VILLAGES
- HAMLETS
- ABORIGINAL LAND
- CROWN LAND
- WATER
- CAMPGROUNDS & RECREATION AREAS
- COMMUNITY HALLS
- FORMER SCHOOL SITES
- CHURCHES

Access

- PAVED - PRIMARY/SECONDARY
- UNPAVED - PRIMARY/SECONDARY
- LOCAL PAVED ROADS
- OILED / GRAVEL ROADS
- GRAVEL ROADS
- UNIMPROVED ROADS
- RAILROAD
- PRIVATELY MAINTAINED